

Section 9. Data Management

This section describes data management for HPTN061 and DataFax, the data management system used by SCHARP. DataFax is a tool that allows for the collection and processing of accurate data for statistical analysis. The success of DataFax depends on the people who use it—both at the sites and at SCHARP. The purpose of this section is to provide site staff with the information they need to successfully complete and transmit DataFax forms for HPTN061.

9.1 Data Management Contact Information

For information about this section of the SSP or about data management procedures for HPTN061, please contact the HPTN061 SCHARP Project Manager:

Corey Kelly

phone: 206-667-5170

e-mail: ckelly@scharp.org

For questions about QC reports, please contact the HPTN061 Data Coordinator:

Susan Tracy-Waisanen

phone: 206-667-6716

e-mail: stracy@scharp.org

9.2 DataFax Overview

DataFax is the data management system used by SCHARP to receive and manage data collected at study sites. The site transmits an electronic image of each case report form (CRF) to SCHARP DataFax, and the original hard copy CRF is retained by the site.

CRF Transmission

SCHARP's Information Technology (IT) Group works with each site to determine the best solution for data transmission on a site-by-site basis.

Data Entry/Quality Control

Once a CRF image is received by SCHARP DataFax, the following occurs:

- DataFax identifies the study to which each CRF belongs using the barcode at the top of the form. It reads and enters the data into the study database and stores each CRF on a computer disk.
- Next, each CRF is reviewed by at least two members of SCHARP's Data Operations Group. Problems such as missing or potentially incorrect data are identified and marked with Quality Control (QC) notes.
- QC notes are compiled into QC reports that are sent via e-mail to the study site on a regular basis. Sites are asked to correct or clarify any problems identified on the QC reports and retransmit the corrected CRFs to SCHARP DataFax.
- When the retransmitted pages are received, SCHARP staff review the corrected pages and resolve the QC notes.

Note: If a change is made to a CRF but the updated page is not retransmitted to SCHARP DataFax, the change will not be entered and the study database will continue to contain incomplete or incorrect data. Additionally, if the change was prompted by a QC note, the note will continue to

appear on subsequent QC reports until the modified CRF is received at SCHARP. Therefore, it is very important that the site retransmit updated CRF pages to SCHARP DataFax **any time** a change is made to data, regardless of whether or not the change was made in response to a QC report.

9.3 DataFax Form Completion

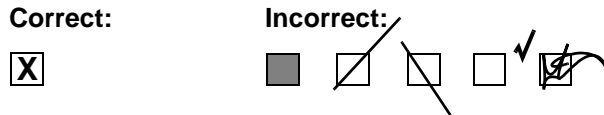
9.3.1 Guidelines

Based on the use of fax technology and Good Clinical Practices (GCPs), the following guidelines should be used for completing DataFax CRFs:

- Use a black or dark blue medium ballpoint pen. Do not use any other type of writing tool. Use only one color per form. That is, do not begin completing a form using a blue pen and then switch to a black pen during the same form completion session.
- Press firmly when recording data or writing comments.
- Print all data and comments legibly by hand. Entries that cannot be read will result in QC notes.
- Do not type data onto CRFs. Do not use cursive/script handwriting, as it can be difficult to read.
- Write numbers as large as possible while staying within the boundaries of the boxes.
- Record data on the front of CRFs only. DataFax cannot read the back of CRFs.
- Do not record data or make marks in the 0.5-inch/1.5-cm margins at the top, bottom, or sides of the CRF.
- If the lines provided for written responses are not long enough, continue in another blank area of the form (within the page margins).
- Mark only one answer except when given the instruction “Mark all that apply.”
- A response is required for every item unless instructed otherwise by a skip pattern.
- **Never** obscure, mark over, or punch holes through the barcode at the top of each CRF. DataFax requires the barcode to identify the CRF.
- **Never** use correction fluid (“white-out”) or correction tape on CRFs.
- Remove any paper clips, staples, or other attachments before transmitting CRFs.
- Because some CRFs are source documents, the site staff person who initially completes the form **must** record his/her initials **and** the date in the space provided in the bottom right-hand corner of each CRF page.
- Transmit forms as soon as possible after they have been completed and reviewed (within the time period specified for the study).

9.3.2 How to Mark Response Boxes

Many items on DataFax CRFs have a box or series of boxes for recording a response. Mark the box clearly with an **X**. Do not fill in the box with shading or mark it with a slash or other character.



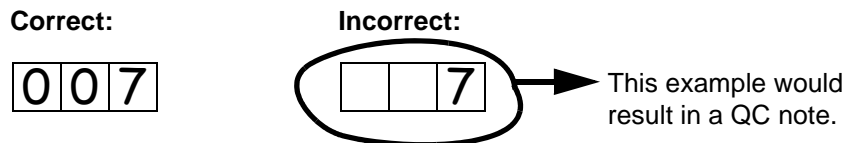
Mark only one response box for each item unless the “Mark all that apply” instruction is present.

9.3.3 How to Record Numbers

Some questions on DataFax CRFs include boxes for recording a numeric response. DataFax can only read the numbers in these boxes if they are recorded clearly. The following instructions should be followed when recording numeric responses:

- Right justify **all** numbers and fill in any blank leading boxes with zeroes. If boxes are left blank, a QC note will be applied asking for the boxes to be filled in.

The following example shows how a value of 7 is recorded when three response boxes



are provided:

- Write the number(s) as large as possible while staying within the boundaries of the box; try not to stray outside the boundaries of the box.

In the following example, the 4 could be misinterpreted as a 7 or a 1 because DataFax can only read what is *inside* the box:



- Write the number(s) simply, with few loops.

The following example shows the format in which numbers will be most easily read by DataFax. Also included are some commonly used formats that may be difficult for DataFax to identify.

Easily Identified:

0 1 2 3 4 5 6 7 8 9

Difficult to Identify:

ø 1 2 3 4 7

9.3.4 How to Record Dates

Dates are recorded using the “dd MMM yy” format, where “dd” represents the two-digit day, “MMM” represents the three-letter abbreviation of the month (in capital letters), and “yy” represents the last two digits of the year.

The month field must be filled in with the three-letter abbreviation *in English* for the date to be read in DataFax. Abbreviations are shown below:

Month	Abbreviation
January	JAN
February	FEB
March	MAR
April	APR
May	MAY
June	JUN
July	JUL
August	AUG
September	SEP
October	OCT
November	NOV
December	DEC

For example, June 1, 2009 would be recorded as follows:

0	1	J	U	N	0	9
---	---	---	---	---	---	---

dd *MMM* *yy*

Sometimes, only a month and a year are required, in which case the response boxes will look like this:

--	--	--	--	--

MMM *yy*

A dosing date of October, 2009, would be recorded as follows:

O	C	T	0	9
---	---	---	---	---

MMM *yy*

9.3.5 How to Record Time

Time is recorded on DataFax CRFs using the 24-hour clock, in which hours are designated from 0–24. For example, in the 24-hour clock 2:25 p.m. translates to 14:25 (2 p.m. = 14), which would be recorded as follows:

1	4	:	2	5
---	---	---	---	---

hr *min*

Note: Midnight is recorded as 00:00.

The following chart shows equivalencies between the 12- and 24-hour clocks:

12-hour clock (a.m.)	24-hour clock	12-hour clock (p.m.)	24-hour clock
Midnight	00:00	Noon	12:00
1:00 a.m.	01:00	1:00 p.m.	13:00
2:00 a.m.	02:00	2:00 p.m.	14:00
3:00 a.m.	03:00	3:00 p.m.	15:00
4:00 a.m.	04:00	4:00 p.m.	16:00
5:00 a.m.	05:00	5:00 p.m.	17:00
6:00 a.m.	06:00	6:00 p.m.	18:00
7:00 a.m.	07:00	7:00 p.m.	19:00
8:00 a.m.	08:00	8:00 p.m.	20:00
9:00 a.m.	09:00	9:00 p.m.	21:00
10:00 a.m.	10:00	10:00 p.m.	22:00
11:00 a.m.	11:00	11:00 p.m.	23:00

9.3.6 Data Corrections and Additions

Sometimes, data on a DataFax CRF may need to be changed, clarified, or amended. There are many reasons why data may need to be changed, such as in response to a QC report or as a result of site review of the CRF before transmitting.

It is important to make these changes to the original CRF—*never* copy data onto a new form. After making the change, the CRF *must* be retransmitted to SCHARP DataFax.

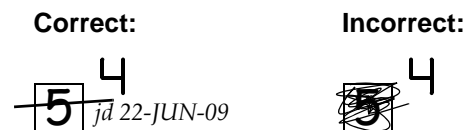
Note: If a correction or addition is made to one page of a multiple-page CRF, only retransmit the page that was changed.

Note: Never write over an entry once it is recorded. Use the standards outlined below when changing, clarifying, or amending data.

Whenever an entry on a DataFax CRF is changed, do the following:

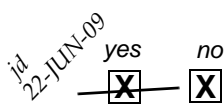
- draw a single horizontal line through the incorrect entry (do not obscure the entry or make it un-readable with multiple cross-outs),

- place the correct or clarified answer near the box, and initial and date the correction as shown below:



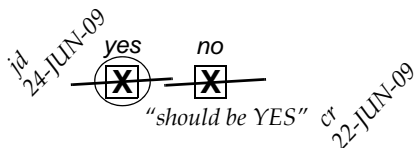
If an **X** is marked in the wrong response box, correct it by doing the following:

- draw a single horizontal line through the incorrectly marked box,
- mark the correct box, and
- initial and date the correction as shown below:



If the correct answer has previously been crossed out, do the following:

- circle the correct item,
- write an explanation in the white space near the item, and
- initial and date all corrections as shown below:



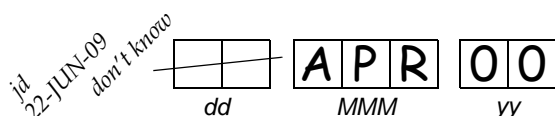
Note: The standards above must be followed whenever a CRF is changed, clarified, or amended, even if the change is made *before* the CRF is faxed to SCHARP for the first time.

9.3.7 How to Handle Missing and Unknown Data

If the answer to an item is not known, is not available, or if the participant refuses to answer, draw a single horizontal line through the blank boxes and initial and date the item. It is helpful to write “don’t know,” “refuses to answer,” “UNK” (unknown), “N/A” (not applicable), or “REF” (refused) near the blank boxes, in addition to initialing and dating the entry.

Note: A skip pattern is the only valid reason to leave a response blank.

For example, when recording a date, if the exact day is not known, draw a single horizontal line through the “dd” boxes and write “don’t know” next to the response boxes, as shown below:



9.3.8 Staff Initials/Date

Every DataFax CRF includes a line in the lower-right corner for a staff member’s initials and the date on which the form was completed. When more than one staff member records data on a CRF, the site should designate the staff member who has primary responsibility for the form. This individual completes the staff initials/date field. The individual not identified in the staff initials/date field writes his/her initials and date next to each data element for which he/she is responsible.

9.4 Site Review of DataFax Forms

Each form must be reviewed for completeness and legibility before being transmitted to SCHARP DataFax. As part of the review, the site should check the following:

- Other than the participant ID number (PTID), there is no information on the form that could identify the participant (e.g., name, phone number, national identification number, or any other personal identifiers).
- A response has been recorded for each item, unless the item has been skipped as instructed by a skip pattern.
- All text responses are clearly recorded.
- There are no marks on or above the DataFax barcode at the top of each DataFax page.
- There are no:
 - missing dates,
 - missing visit codes,
 - incorrect PTIDs,
 - incorrect visit codes, and/or
 - missing data for items beginning a series of skip patterns.

While CRFs are being reviewed, it is important that they are stored and tracked systematically. It is also necessary to have a system to identify whether a CRF has been transmitted to SCHARP DataFax. Such a system may include using a stamp to date the back of the CRF.

Important: Use *only* the back of the CRF for a date stamp, *never* the front. Be sure to date stamp the back of the CRF each time it is transmitted, including retransmissions.

9.5 Faxing DataFax Forms

To streamline the submission of DataFax forms, the site should identify which staff members will be responsible for transmitting forms to SCHARP DataFax and receiving and responding to QC reports.

It is important that the site transmits completed CRFs to SCHARP within 24-48 hours whenever possible, and that they respond promptly to requests for clarifications and corrections included in QC reports. Early detection of recurrent problems provides an opportunity to reduce errors and improve data quality.

9.6 Participant IDs

DataFax uses a unique participant identification number (PTID) to identify each study participant in the database. SCHARP provides each site with a list of PTIDs prior to study start-up. The site should assign one PTID to each study participant in sequential order, crossing out each PTID after it has been assigned to ensure that it is used only once.

PTID boxes are located near the upper left corner of each DataFax CRF. On multiple page CRFs, the PTID must be filled in on each page. Below is the PTID structure used for HPTN061:

							<p>Site Number/Unit ID = assigned by SCHARP</p> <p>Participant Number = unique number assigned to each participant</p> <p>Check Digit (Chk) = ensures accuracy of PTID</p>
Site Number	Participant Number				Chk		

9.7 Visit Codes

DataFax CRFs include boxes in the upper right corner for a visit code. DataFax uses this number to identify the visit at which the CRF was completed.

Visit Code .

In the above example, the enrollment visit would be recorded as 01.0. All study visit codes are listed in the table below:

Study Visit	Visit Code
Enrollment	01.0
26 Week Visit (6 Month)	02.0
52 Week Visit (12 Month)	03.0

9.7.1 Interim Visit Codes

In addition to the scheduled, protocol-required visits listed above, Interim Visits may occur after enrollment into the trial. Interim visits occur when the participant visits the study clinic outside of the regular study schedule (e.g., for HIV testing or to report a Social

Impact). Interim visit codes should only be assigned if DataFax CRFs are completed and submitted to document that interim visit.

Note: *If no DataFax CRF pages are required to document the visit, then an Interim Visit code should not be assigned because skipping of Interim Visit codes is not allowed in the DataFax database at SCHARP and would cause a QC note to be added to the QC report.*

Interim visit codes are assigned using the following guidelines:

- In the box(es) to the left of the decimal point, record the two-digit visit code for the most recent scheduled visit (even if this visit was missed).
- Use the guide below to complete the box to the right of the decimal point:
 - 1 = the first interim visit after the most recent scheduled visit,
 - 2 = the second interim visit after the most recent scheduled visit,
 - 3 = the third interim visit after the most recent scheduled visit, and so on.

For example, the first interim visit after Enrollment would be recorded as follows:

Visit Code

0	1
---	---

 .

1

The second interim visit after Enrollment (but before the 26 Week Follow-up Visit) would be recorded as follows:

Visit Code

0	1
---	---

 .

2

9.7.2 Page Numbers

Not all DataFax CRFs include boxes for visit codes. If a form is only completed and faxed in one time during a study (e.g., Demographics or Enrollment), the visit code will be automatically assigned in DataFax.

Other CRFs, such as log forms (e.g., Referral Log), may include boxes in the upper right corner for page numbers, as shown below:

Page

--	--

In the example of the Referral Log, the participant's first three referrals would be on page 01, the fourth, fifth and sixth referral would be page 02, and so on, through out their participation in the study, regardless of the visit when the referral was reported.

9.7.3 ISO Country Codes

The HPTN061 Demographics CRF, item 6, records the participant's country of birth. The most common codes are listed on the back of the form. For the complete list please see the end of this Section.

9.8 Study Visit Timing

All visits after enrollment are based on the day of enrollment, which is considered to be Day 0. The table below lists the visit target dates and visit windows. The “Allowable” visit windows are the time frame within which each visit must take place or it is considered missed. In addition to these visit windows SCHARP also uses more restricted visit windows called “Target” Visit Windows. The Target Visit Windows are used by DataFax to query for an “overdue” visit and by the Retention Reports to determine whether a visit has been conducted “early” or “late.”

Visit	Visit Code	Visit Target Day	Target Visit Window	Allowable Visit Window
Enrollment	01.0	Day 0		
26 Week Visit	02.0	Day 182	Days 168 - 196	Day 140 - 322
52 Week Visit	03.0	Day 365	Days 351 - 379	Days 323 - until site closes

9.8.1 Missed Visits

A scheduled visit is considered to be missed if not completed within the visit windows in the table above.

If it happens that a visit or contact can be completed within the Allowable Window after a Missed Visit form has been submitted, draw a line through the previously submitted Missed Visit form, add a note that it should be deleted and why, initial and date, and re-submit it to SCHARP DataFax. Complete all of the scheduled visit procedures, code all visit forms with the scheduled visit code, and fax the CRF pages.

9.9 Termination and Reactivation

Participants are terminated from study participation when they have completed the final study visit; died; refused further participation in the study; relocate; investigator has decided they can or should no longer participate (however, see HPTN Operations Policy HPTN006); or the study site staff can no longer contact the participant (lost-to-follow-up). Participants who have been terminated from the study due to lost-to-follow-up, refusal, or relocation, who return to the study site before the end of the Allowable Visit window for their exit visit may be allowed to rejoin the study, and should be encouraged to do so. Participants are reactivated by writing “unterminate” or “delete” on the previously submitted Termination form and refaxing to SCHARP. Please note that a Missed Visit form must be completed for each missed visit or phone contact during the period the participant was not in contact with the site.

9.10 ACASI Questionnaire Overview

HPTN061 includes use of a web-based Audio Computer Assisted Self-Interview (ACASI) that allows participants to privately enter their own answers, without the help of an interviewer, to potentially sensitive or embarrassing questions about behavior into a laptop or computer. The

ACASI questionnaire is to be administered at Enrollment and all Follow-up visits.

The primary version of the ACASI questionnaire is the web-based version, which should always be used except when there is no access to the internet. The web version allows the participant's information to be automatically sent and saved at SCHARP with no effort on the part of the site's data management staff. There is a version that can be down-loaded onto one or more laptops or computers at the study sites to be run "locally" on that computer, but this version requires data management or IT staff to make the extra step of up-loading complete questionnaire data to the SCHARP server and should only be used as a back-up version on occasions when there is no access to the internet. For information about the local version of the ACASI questionnaire please send e-mail to acasi@scharp.org.

9.10.1 Remote Data Collection and Troubleshooting Instructions

For the most up to date instructions regarding Remote Data Collection, Illume software or ACASI survey downloads and/or any troubleshooting please visit the HPTN-061 portal:

<https://hptn.fhi.org/061/CRFs/Forms/AllItems.aspx>

9.10.2 Sample Questionnaire

For training purposes, SCHARP has created a sample questionnaire that allows site staff to walk the participant through various kinds of questions and responses they will see while taking the HPTN061 ACASI Survey. In order to access the sample questionnaire, go to:

https://live.datstat.com/SCHARP-Collector/Survey.ashx?Name=Intro_Survey

9.10.3 Logging into the web-based HPTN061 ACASI

In order to access the HPTN061 ACASI survey go to:

https://live.datstat.com/SCHARP-Collector/Survey.ashx?Name=PTN061_Part1

If you have any problems with the ACASI survey, please contact the HPTN061 SCHARP Project Manger and e-mail acasi@scharp.org.

9.11 Social and Sexual Network Questionnaire Overview

HPTN061 will also be using another web-based tool to collect information about each participant's social and sexual network at each follow-up visit. This is the interviewer-administered Social and Sexual Network Questionnaire (SSN). The SSN is accessed through the ATLAS website portal <https://atlas.scharp.org/cpas/project/HPTN/061/Social%20and%20Sexual%20Network%20Questionnaire/begin.view?> using either Firefox (for best functionality) or Internet Explorer, and will be navigated by site staff based on the participant's

answers. Instructions are provided on the ATLAS portal for all staff members responsible for administering the SSN to participants.

If you have any problems with ATLAS or completing the questionnaire, please contact the HPTN061 SCHARP Project Manger and e-mail atlas@scharp.org.

9.12 HPTN-061 Schedule of Forms

The DataFax data collection forms required for each study visit are summarized in the table below:

ENROLLMENT (DAY 0)		VISIT CODE: 01.0
Acronym	Form Name	Plate #
<i>REQUIRED</i>		
DEM-1-4	Demographics	001, 002, 003, 004
ENR-1-2	Enrollment	071, 072
ELR-1	Enrollment STI Laboratory Results	075
BPR-1	Baseline Prevention Research Questionnaire	080
HCU-1-4	Health Care Utilization	091, 092, 093, 094
HTR-1-2	HIV Test Results	201, 202
<i>AS NEEDED</i>		
PHE-1-3	Peer Health Navigation Encounter	191, 192, 193
RL-1	Referral Log	330
AHT-1-2	Additional HIV Test Results	251, 252
WEEK 26 VISIT (DAY 182)		VISIT CODE: 02.0
Acronym	Form Name	Plate #
<i>REQUIRED</i>		
FUV-1-2	Follow-up Visit	121, 122
FLR-1	Follow-up STI Laboratory Results	131
FPR-1-3	Follow-up Prevention Research Questionnaire	181, 182, 183
HCU-1-4	Health Care Utilization	091, 092, 093, 094
HTR-1-2	HIV Test Results	201, 202
<i>AS NEEDED</i>		
IV-1	Interim Visit	350
MRR-1	Medical Records Review	085
PHE-1-3	Peer Health Navigation Encounter	191, 192, 193
RL-1	Referral Log	330
SIL-1	Social Impact Log	152
AHT-1-2	Additional HIV Test Results	251, 252
PT-1	Participant Transfer	465
PRC-1	Participant Receipt	466
MV-1	Missed Visit	463
ESI-1	End of Study Inventory	489
TM-1	Termination	490

WEEK 52 VISIT (DAY 356)		VISIT CODE: 3.0
Acronym	Form Name	Plate #
<i>REQUIRED</i>		
FUV-1-2	Follow-up Visit	121, 122
FLR-1	Follow-up STI Laboratory Results	131
FPR-1-3	Follow-up Prevention Research Questionnaire	181, 182, 183
HCU-1-4	Health Care Utilization	091, 092, 093, 094
HTR-1-2	HIV Test Results	201, 202
ESI-1	End of Study Inventory	489
TM-1	Termination	490
<i>AS NEEDED</i>		
MRR-1	Medical Records Review	085
RL-1	Referral Log	330
SIL-1	Social Impact Log	152
AHT-1-2	Additional HIV Test Results	251, 252
PT-1	Participant Transfer	465
PRC-1	Participant Receipt	466
MV-1	Missed Visit	463

Country Name	UN/ISO numeric	Country Name	UN/ISO numeric	Country Name	UN/ISO numeric
AFGHANISTAN	4	BOSNIA AND HERZEGOVINA	70	CUBA	192
ÅLAND ISLANDS	248	BOTSWANA	72	CYPRUS	196
ALBANIA	8	BOUVET ISLAND	74	CZECH REPUBLIC	203
		BRAZIL	76	DENMARK	208
ALGERIA (El Djazaïr)	12	BRITISH INDIAN OCEAN TERRITORY	86	DJIBOUTI	262
AMERICAN SAMOA	16	BRUNEI DARUSSALAM	96	DOMINICA	212
ANDORRA	20	BULGARIA	100	DOMINICAN REPUBLIC	214
ANGOLA	24	BURKINA FASO	854	ECUADOR	218
ANGUILLA	660	BURUNDI	108	EGYPT	818
ANTARCTICA	10	CAMBODIA	116	EL SALVADOR	222
ANTIGUA AND BARBUDA	28	CAMEROON	120	EQUATORIAL GUINEA	226
ARGENTINA	32	CANADA	124	ERITREA	232
ARMENIA	51	CAPE VERDE	132	ESTONIA	233
ARUBA	533	CAYMAN ISLANDS	136	ETHIOPIA	231
		CENTRAL AFRICAN REPUBLIC	140		
AUSTRALIA	36	CHAD (Tchad)	148	FAEROE ISLANDS	234
AUSTRIA	40	CHANNEL ISLANDS	830	FALKLAND ISLANDS (MALVINAS)	238
AZERBAIJAN	31	CHILE	152	FIJI	242
BAHAMAS	44	CHINA	156	FINLAND	246
BAHRAIN	48	CHRISTMAS ISLAND	162	FRANCE	250
BANGLADESH	50	COCOS (KEELING) ISLANDS	166	FRENCH GUIANA	254
BARBADOS	52	COLOMBIA	170	FRENCH POLYNESIA	258
				FRENCH SOUTHERN TERRITORIES	260
BELARUS	112	COMOROS	174	GABON	266
BELGIUM	56	CONGO, REPUBLIC OF	178		
		CONGO, THE DEMOCRATIC REPUBLIC OF THE (formerly Zaire)	180	GAMBIA, THE	270
BELIZE	84	COOK ISLANDS	184	GEORGIA	268
BENIN	204			GERMANY (Deutschland)	276
BERMUDA	60	COSTA RICA	188		
BHUTAN	64	CÔTE D'IVOIRE (Ivory Coast)	384	GHANA	288
BOLIVIA	68	CROATIA (Hrvatska)	191	GIBRALTAR	292

Country Name	UN/ISO numeric	Country Name	UN/ISO numeric	Country Name	UN/ISO numeric
GREAT BRITAIN	826	KAZAKHSTAN	398	MEXICO	484
GREECE	300	KENYA	404	MICRONESIA (Federated States of Micronesia)	583
GREENLAND	304	KIRIBATI	296	MOLDOVA	498
GRENADA	308	KOREA (Democratic Peoples Republic of [North] Korea)	408	MONACO	492
GUADELOUPE	312	KOREA (Republic of [South] Korea)	410	MONGOLIA	496
GUAM	316	KUWAIT	414	MONTENEGRO	499
GUATEMALA	320	KYRGYZSTAN	417	MONTSERRAT	500
		LAO PEOPLE'S DEMOCRATIC REPUBLIC	418	MOROCCO	504
GUINEA	324	LATVIA	428	MOZAMBIQUE (Moçambique)	508
GUINEA-BISSAU	624	LEBANON	422	MYANMAR (formerly Burma)	104
GUYANA	328	LESOTHO	426	NAMIBIA	516
HAITI	332	LIBERIA	430	NAURU	520
HEARD ISLAND AND MCDONALD ISLANDS	334	LIBYA (Libyan Arab Jamahirya)	434	NEPAL	524
HONDURAS	340	LIECHTENSTEIN (Fürstentum Liechtenstein)	438	NETHERLANDS	528
HONG KONG (Special Administrative Region of China)	344	LITHUANIA	440	NETHERLANDS ANTILLES	530
HUNGARY	348	LUXEMBOURG	442	NEW CALEDONIA	540
ICELAND	352	MACAO (Special Administrative Region of China)	446	NEW ZEALAND	554
INDIA	356	MACEDONIA (Former Yugoslav Republic of Macedonia)	807	NICARAGUA	558
INDONESIA	360	MADAGASCAR	450	NIGER	562
IRAN (Islamic Republic of Iran)	364	MALAWI	454	NIGERIA	566
IRAQ	368	MALAYSIA	458	NIUE	570
IRELAND	372	MALDIVES	462	NORFOLK ISLAND	574
ISLE OF MAN	833	MALI	466	NORTHERN MARIANA ISLANDS	580
ISRAEL	376	MALTA	470	NORWAY	578
ITALY	380	MARSHALL ISLANDS	584	OMAN	512
JAMAICA	388	MARTINIQUE	474	PAKISTAN	586
JAPAN	392	MAURITANIA	478	PALAU	585
		MAURITIUS	480	PALESTINIAN TERRITORIES	275
JORDAN (Hashemite Kingdom of Jordan)	400	MAYOTTE	175	PANAMA	591

Country Name	UN/ISO numeric	Country Name	UN/ISO numeric	Country Name	UN/ISO numeric
PAPUA NEW GUINEA	598	SLOVAKIA (Slovak Republic)	703	TUVALU	798
PARAGUAY	600	SLOVENIA	705	UGANDA	800
PERU	604	SOLOMON ISLANDS	90	UKRAINE	804
PHILIPPINES	608	SOMALIA	706	UNITED ARAB EMIRATES	784
PITCAIRN	612	SOUTH AFRICA (Zuid Afrika)	710	UNITED KINGDOM (Great Britain)	826
POLAND	616	SOUTH GEORGIA AND THE SOUTH SANDWICH ISLANDS	239	UNITED STATES	840
PORTUGAL	620	SPAIN (España)	724	UNITED STATES MINOR OUTLYING ISLANDS	581
PUERTO RICO	630	SRI LANKA (formerly Ceylon)	144	URUGUAY	858
QATAR	634	SUDAN	736	UZBEKISTAN	860
RÉUNION	638	SURINAME	740	VANUATU	548
ROMANIA	642	SVALBARD AND JAN MAYEN	744	VATICAN CITY (Holy See)	336
RUSSIAN FEDERATION	643	SWAZILAND	748	VENEZUELA	862
RWANDA	646	SWEDEN	752	VIET NAM	704
SAINT BARTHÉLEMY	652	SWITZERLAND (Confederation of Helvetia)	756	VIRGIN ISLANDS, BRITISH	92
SAINT HELENA	654	SYRIAN ARAB REPUBLIC	760	VIRGIN ISLANDS, U.S.	850
SAINT KITTS AND NEVIS	659	TAIWAN ("Chinese Taipei" for IOC)	158	WALLIS AND FUTUNA	876
SAINT LUCIA	662	TAJIKISTAN	762	WESTERN SAHARA (formerly Spanish Sahara)	732
SAINT MARTIN (French portion)	663			YEMEN (Yemen Arab Republic)	887
SAINT PIERRE AND MIQUELON	666	TANZANIA	834	ZAMBIA (formerly Northern Rhodesia)	894
SAINT VINCENT AND THE GRENADINES	670	THAILAND	764		
SAMOA (formerly Western Samoa)	882	TIMOR-LESTE (formerly East Timor)	626	ZIMBABWE	716
SAN MARINO (Republic of)	674	TOGO	768		
SAO TOME AND PRINCIPE	678	TOKELAU	772		
SAUDI ARABIA (Kingdom of Saudi Arabia)	682	TONGA	776		
SENEGAL	686	TRINIDAD AND TOBAGO	780		
SERBIA (Republic of Serbia)	688	TUNISIA	788		
SEYCHELLES	690	TURKEY	792		
SIERRA LEONE	694	TURKMENISTAN	795		
SINGAPORE	702	TURKS AND CAICOS ISLANDS	796		