

**HIV Science: “What have you
done for me lately?”**

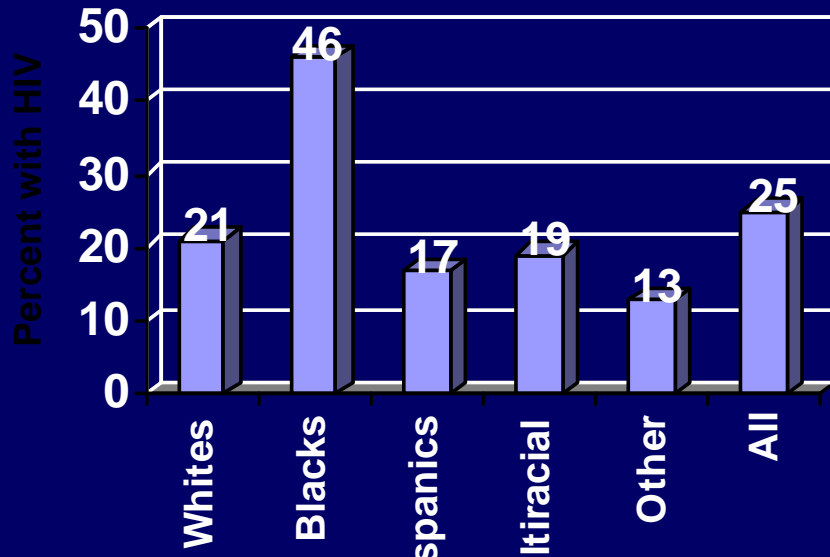
**Presented at the 2009
National African American MSM
Leadership Conference on HIV/AIDS
Atlanta, GA
January 24, 2009**

Presenter: Darrell P. Wheeler, Ph.D., M.P.H.

Why Focus on Black MSM ?

High HIV prevalence despite significantly lower rates of high risk behaviors

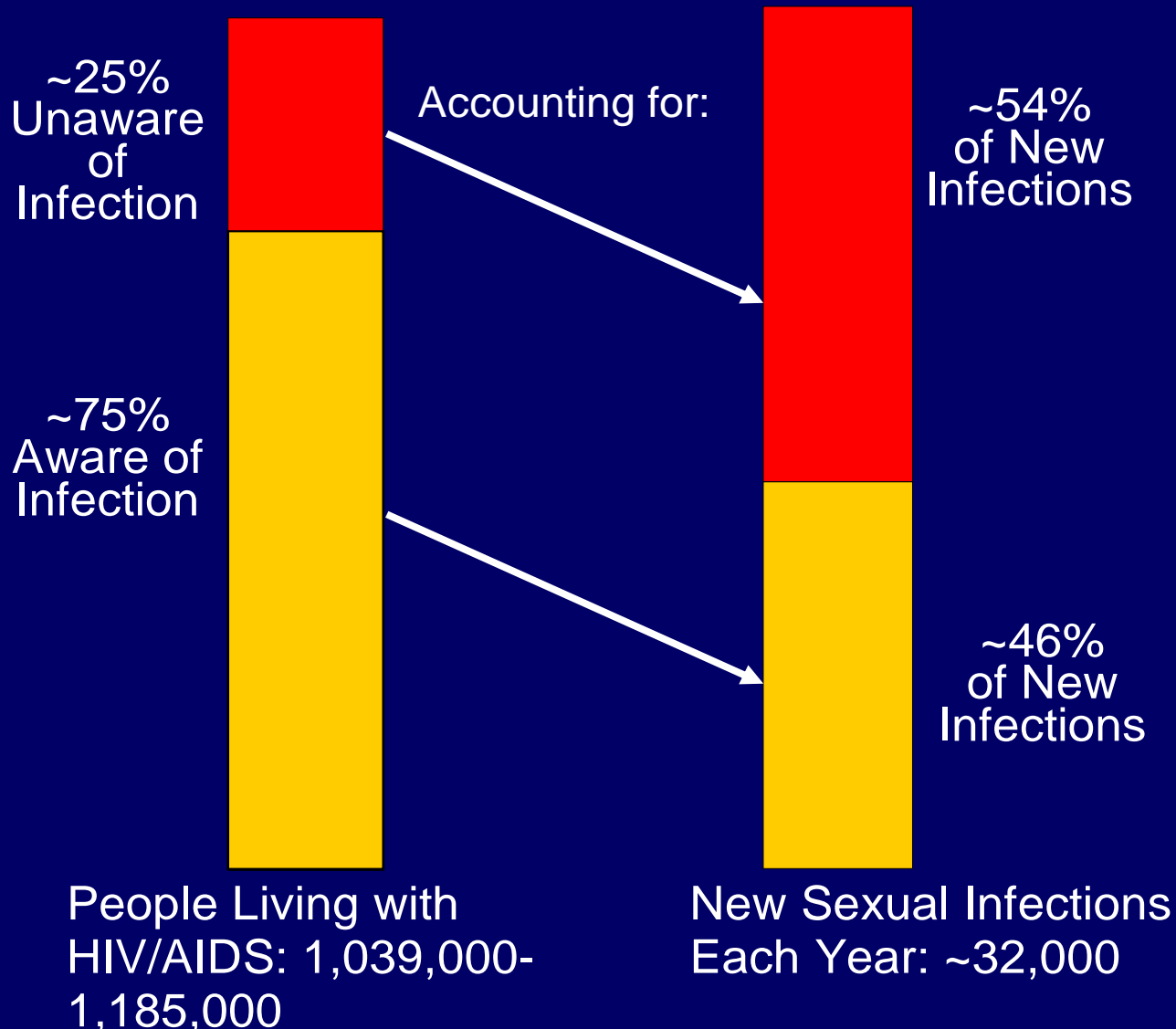
HIV Prevalence Among MSM,
5-City CDC Survey, 2004-2005



- Young Black MSM significantly less likely than young white MSM to engage in unprotected anal sex and to use drugs associated with ↑ risk of HIV infection
- Black MSM are more likely to engage in sex with other Black MSM, than other racial partners
- High rates of Bacterial and Viral STI potentiate HIV transmission

- Interventions that only try to modify individual risk behaviors may not be effective in preventing HIV

Awareness of Serostatus Among People with HIV and Estimates of Transmission



Which issues may affect Black MSM?

- Racism (including Gay Community)
- Homophobia (including Black Community)
- Economic Disparities
- Health Disparities
- Lack of Social Support
- Violence (homophobic, domestic, community)
- Sexual abuse (childhood, survival sex)
- Depression and other Mental Health concerns
- Denial

HIV Prevention: Where is the field currently?

- Vaccines seem years away.
- Non-specific topical microbicides have not been successful.
- STD interventions for MSM have not decreased HIV incidence.
- Use of antiretrovirals for prevention still years away from proof and operationalization.

Black MSM in the epidemic today

- Estimates suggest that $\frac{1}{4}$ of nearly 60,000 new HIV infections expected in the U.S. next year will be among Black MSM.
- Thus, the need for more renewed focus on understanding sexual networks, patterns of risk and ways of better engaging community members in prevention work.

What may protect Black MSM?

- Learned resiliency in the face of many stressors
- Peer group(s)
- Families: by birth and/or by choice
- Community support/cultural pride
- Religion/spirituality
- Professionals: medical or mental health
- Education/Health information

HPTN 061: Multi-component community-wide intervention among Black MSM

Sexual risk behaviors and substance use do not explain the differences in HIV infection between Black and White MSM

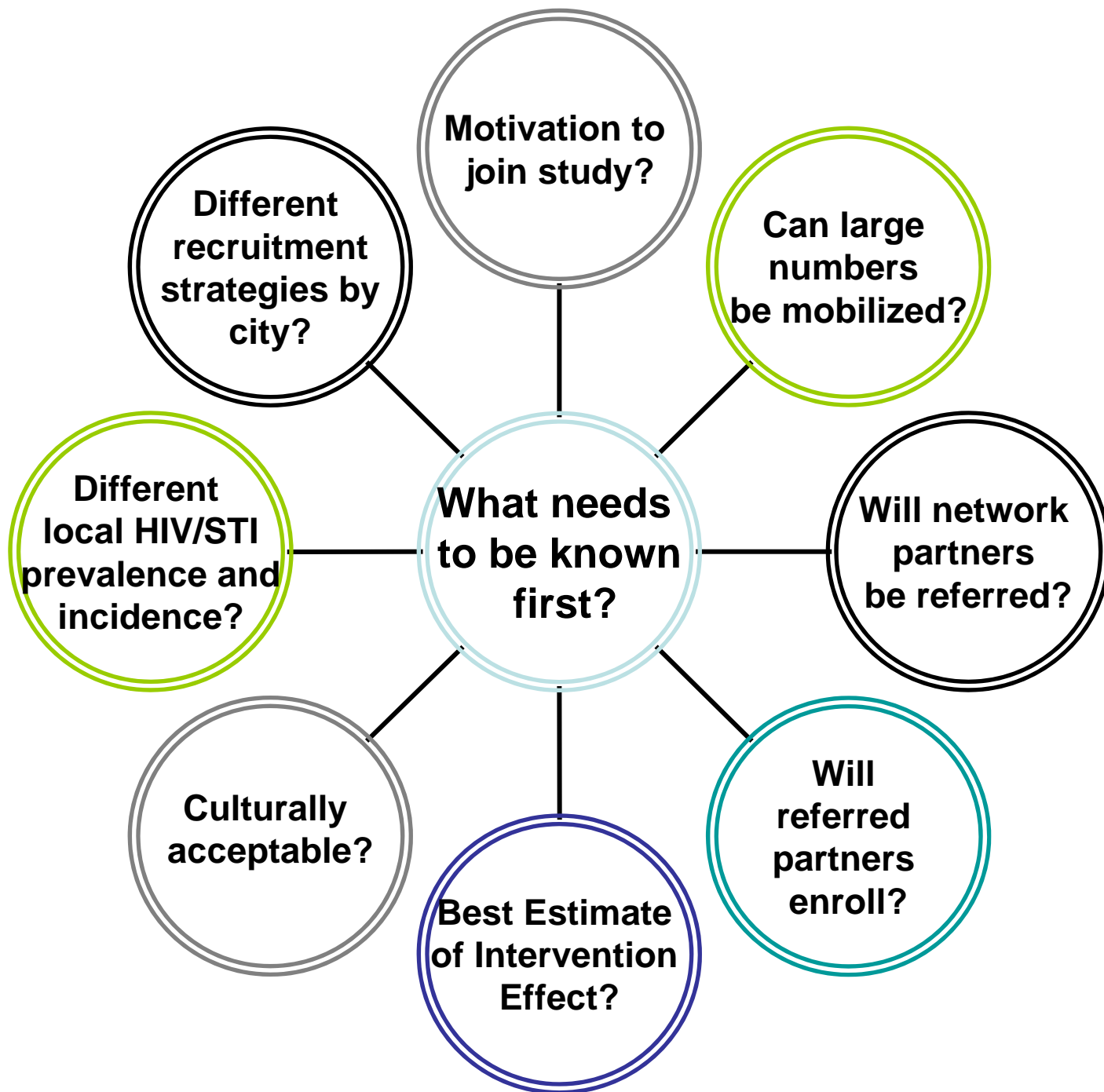
The most likely causes of disproportionate HIV infection rates among Black MSM are:

Low frequency of HIV testing among Black MSM

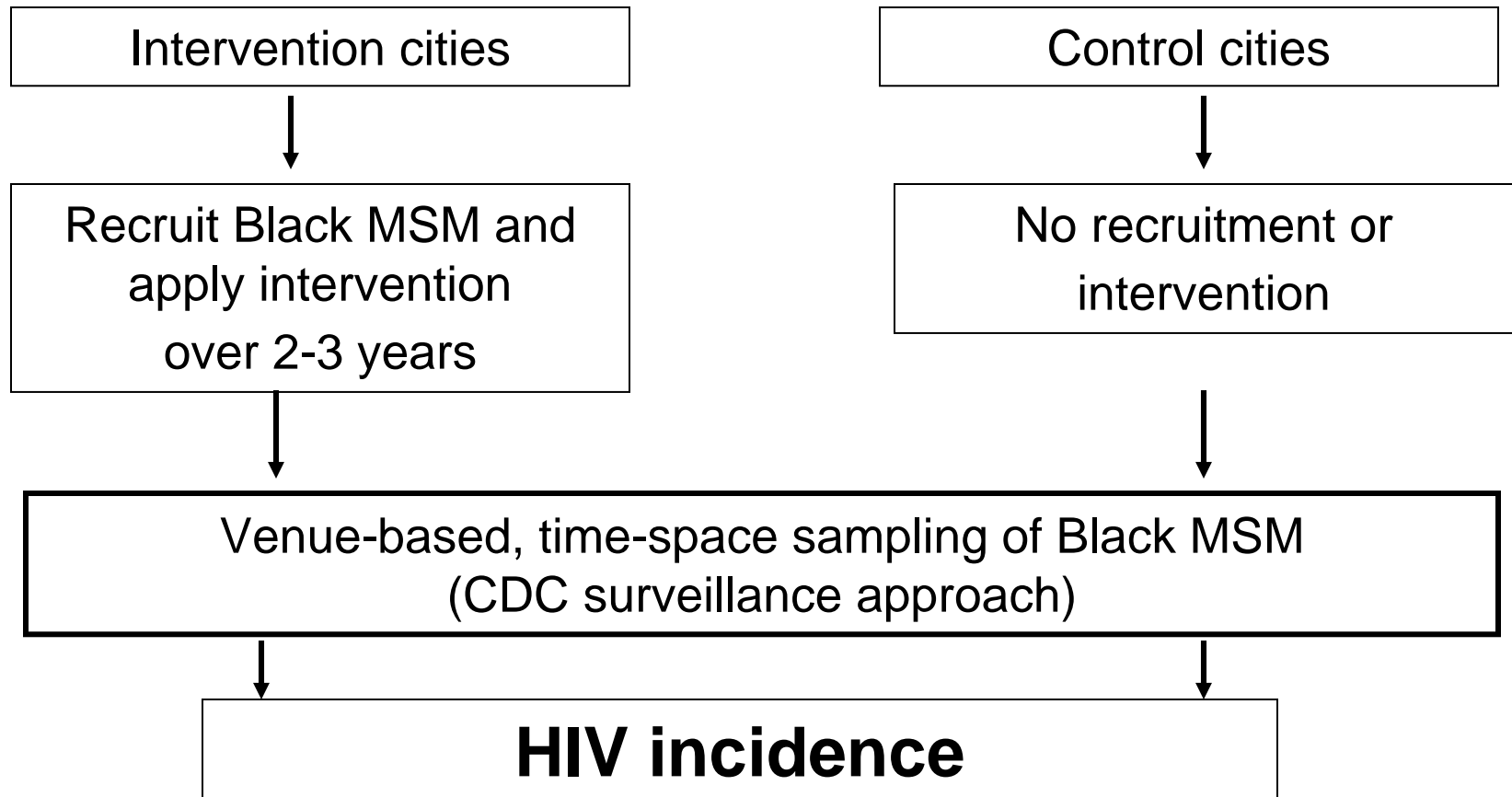
High HIV prevalence in Black MSM networks

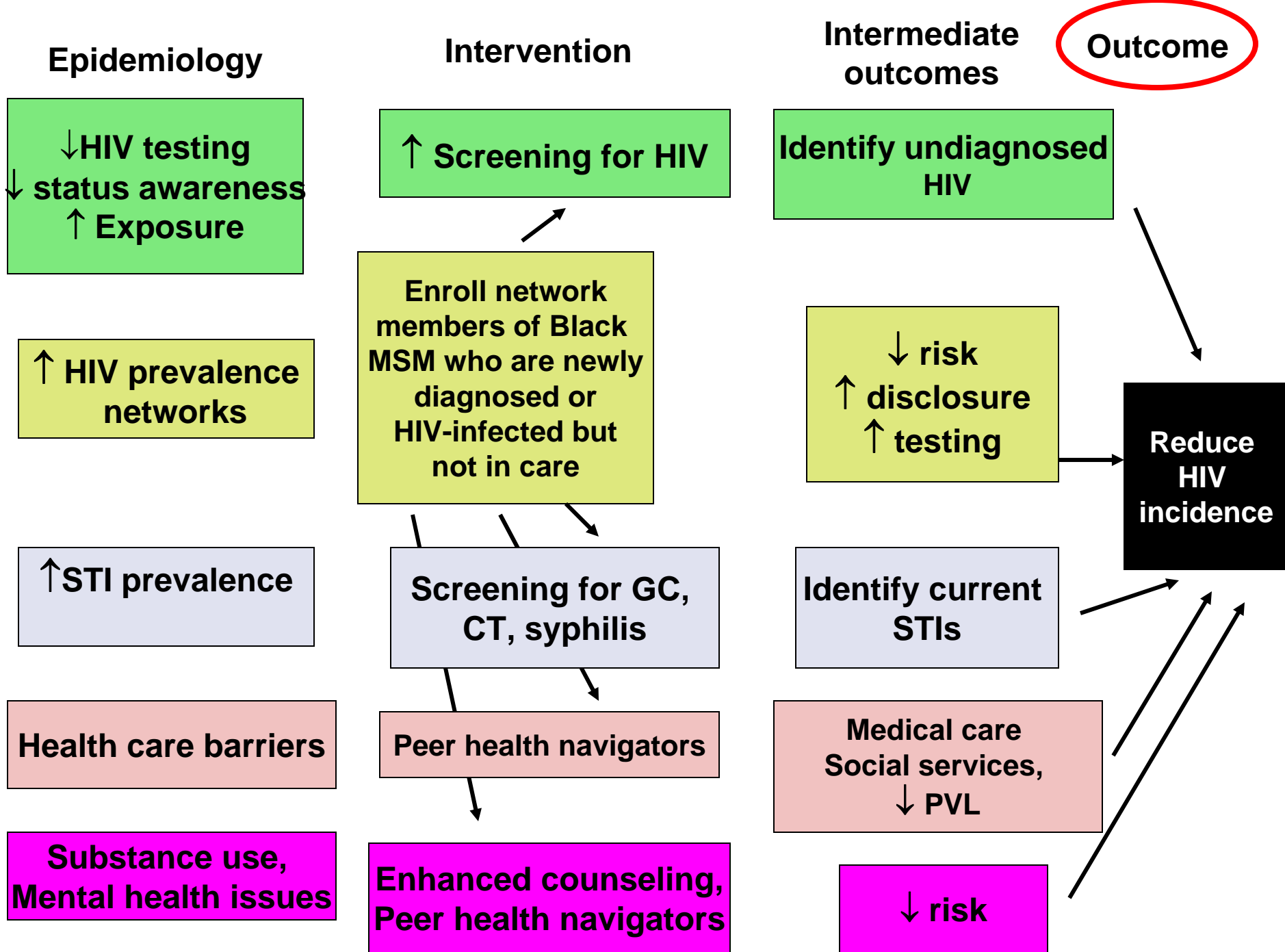
High prevalence of other STIs facilitating transmission

Barriers to health care access and HIV/STI treatment



Design of the Future Intervention Trial
**Community-level randomization
in 16-30 cities**





Design issues for full intervention trial

- Level of randomization
 - community-level due to involvement of sexual networks
- Measurement of intervention effect – HIV incidence
 - Sentinel cohort vs. cross-sectional sample
 - Estimation of incidence from cross-sectional studies
 - Need for ‘random sample’ of Black MSM
- Feasibility
 - Recruitment
 - Uptake of intervention
 - Estimation of intervention effect

HPTN 061: Primary Objectives

To obtain information needed to design the full community-randomized trial in the areas of:

- **Recruitment of Black MSM**
- **Uptake of the intervention components, including:**
 - proportion who agree to HIV testing
 - proportion who agree to STI testing; and
 - proportion who utilize peer navigation.
- **Estimating in the course of the study:**
 - proportion of participants who are newly diagnosed with HIV at enrollment
 - increase in condom use from enrollment to week 52
 - decrease in viral load among HIV infected participants from initiation of HAART to week 52
 - decrease in STIs from enrollment to week 52
- **Satisfaction of Black MSM with intervention components.**

HPTN 061: Secondary Objectives

- Collect samples, behavioral data and HIV test results to improve laboratory measures of HIV incidence in cross-sectional studies
- Estimate HIV incidence rate under intervention condition
- Estimate intervention effect on HIV incidence rate through mathematical modeling
- Describe social and sexual networks of Black MSM based on individually self-reported network data.
- Describe risk behaviors of sexual network members of Black MSM, especially of those who are newly diagnosed with HIV infection, or previously diagnosed but not in care
- Assess attitudes of Black MSM toward other prevention interventions.

HPTN 061: Secondary Objectives

- Use qualitative research methods to:
 - Examine individual, interpersonal, cultural, institutional, and geographic-specific processes that influence study participation and uptake of intervention components
 - Understand how and to what extent stigma and discrimination (and other emergent themes) influence HIV testing and access to care by geographic region

HIV System Navigation (HSN): An Emerging Model to Improve HIV Care Access

- **Near Peers**
- **Structured training**
HRSA-funded evaluation:
Helpful for engagement in care, adherence, retention
- **Unique feature of HPTN 061:**
assessment of HSN for HIV Prevention and Care

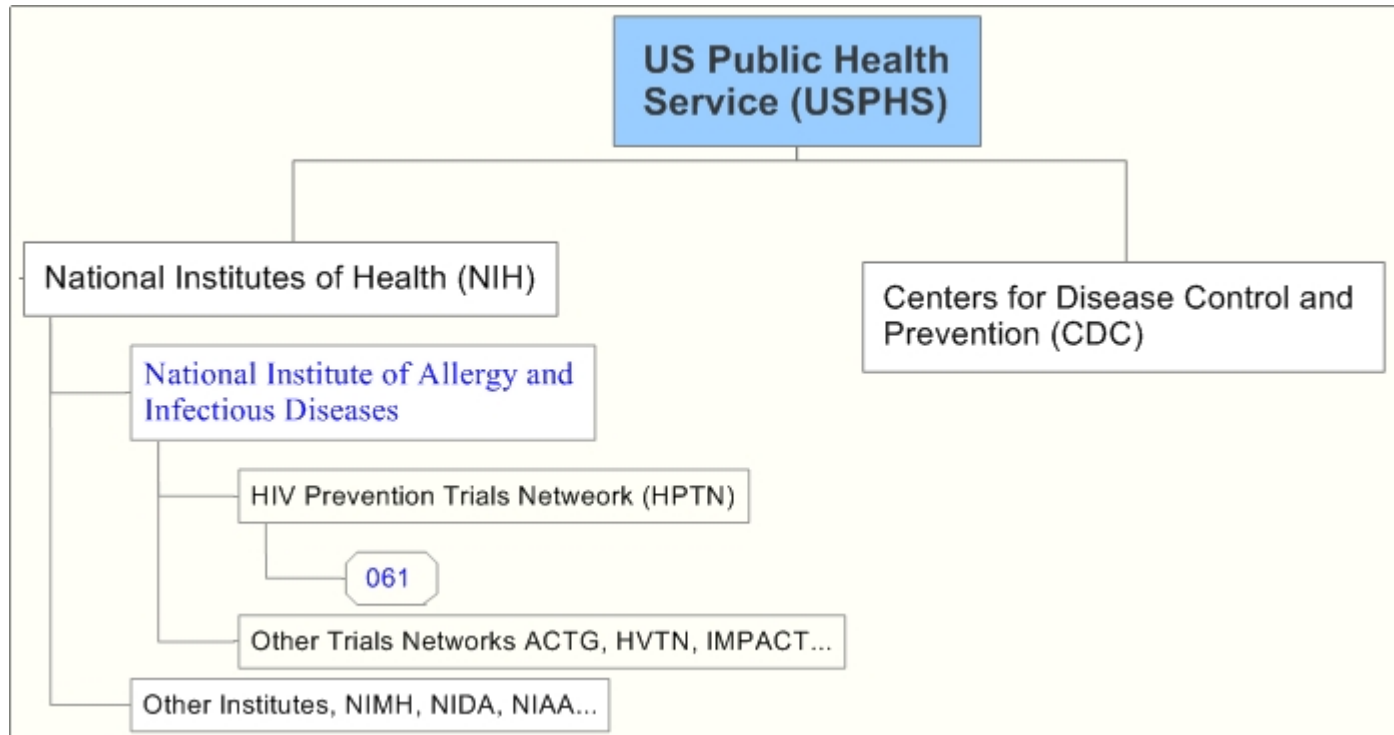
Bradford, AIDS Patient Care & STDs, 2007

Health System Navigation
Personal coaching to help HIV+ people see the doctor

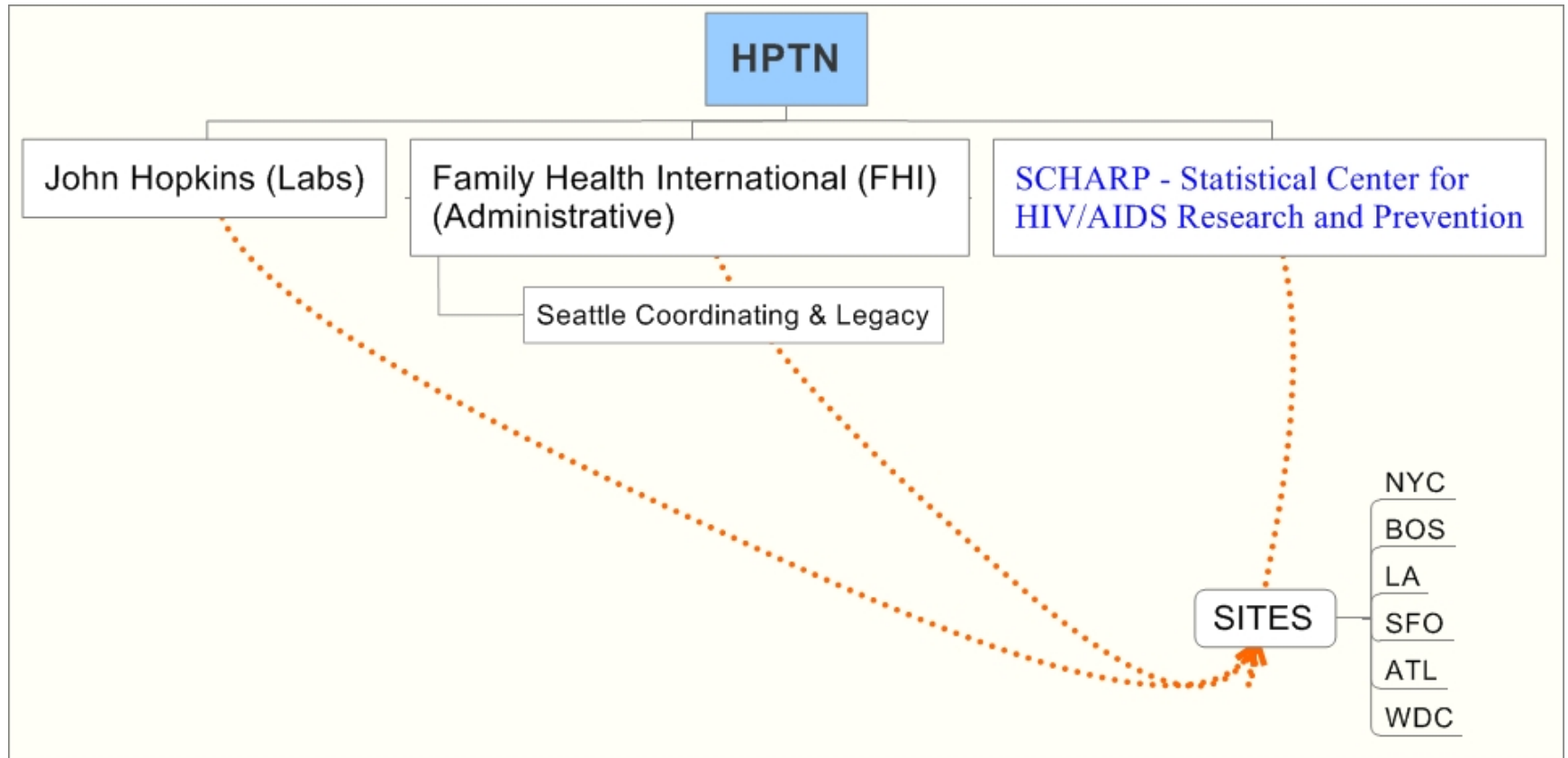
Health System Navigation Training Manual

What is it?
Why is it needed?
How do you do it?
Plus skills building to do it well.

HPTN (1)



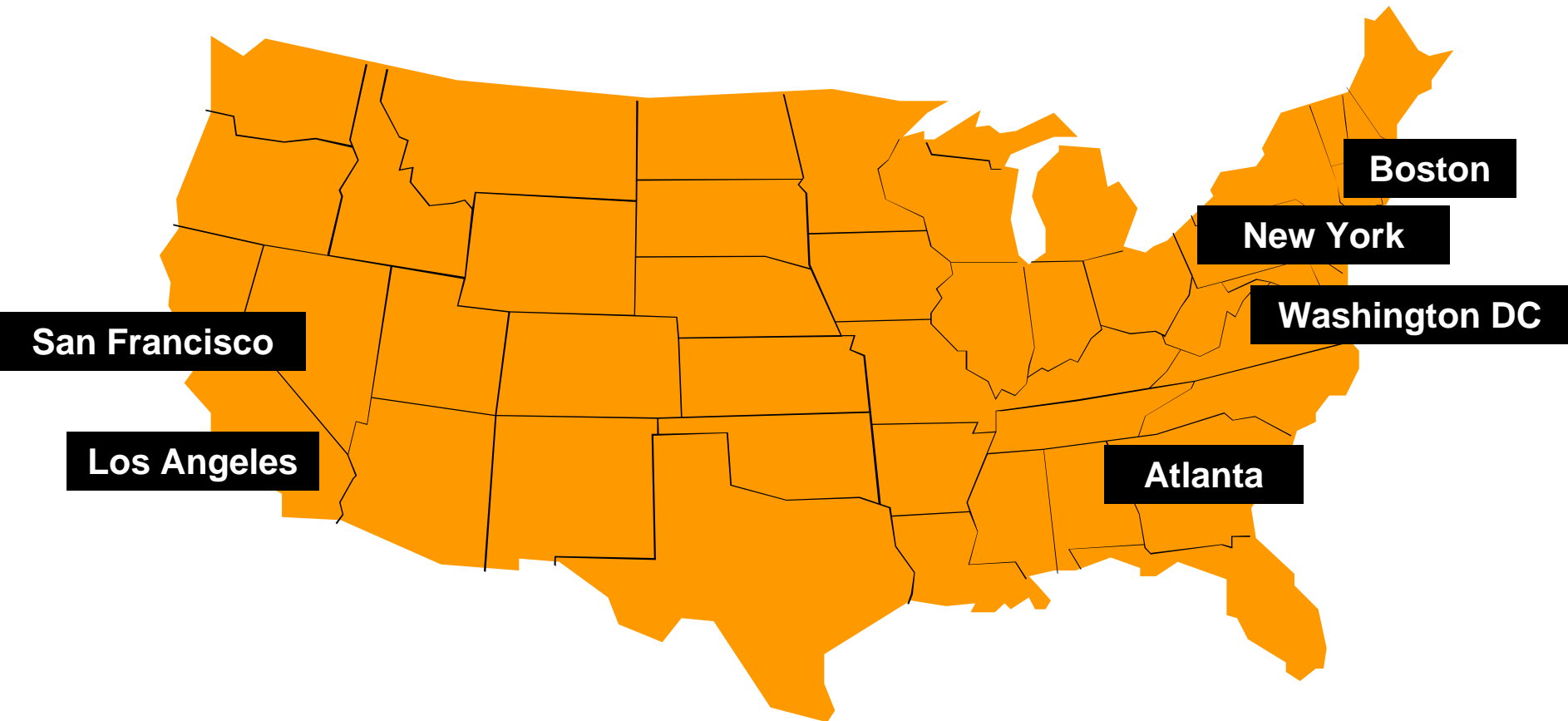
HPTN (2)



Site Selection Considerations

- Queried all HPTNs that had been funded to conduct prevention research
- Sites selected on the basis of:
 - Experience** working with Black MSM
 - Local demographics**
 - Geographic diversity**
 - Ability to compare larger and smaller cities**
 - Multi-modality** research experience
 - Lack of competing projects that could affect enrollment**
- Input from NIH and Community experts

HPTN 061: Sites



HPTN 061 PROTOCOL TEAM/STUDY TEAM

Beryl Koblin
Ken Mayer
Darrell Wheeler
Sam Griffith
Deborah Donnell
Lei Wang
Laith Abu-Raddad
Susan Eshleman
Lynda Emel
Corey Kelly
Estelle Piwowar-
Manning
Kate MacQueen
Wafaa el-Sadr

Technical Experts

Greg Millett
Ronald Stall
Carl Latkin
Judith Bradford
Leo Wilton

Sonya Arreola
Trish Case
Katharine Shelly

Community Experts

Jonathan Lucas
Steven Wakefield
Kaijson Noilmar
Charles Stephens
Mark Kornegay
Gavin Morrow-Hall

NIH

Vanessa Elharrar
Christopher Gordon
Richard Jenkins
David Burns
Sheryl Zwierski

Dianne Rausch
Katherine Davenny
Kendall Bryant
William Grace

Additional Contributors

Kevin Fenton
Richard Wolitski
David Purcell
Jeffrey Herbst
Nicole Crepaz
Kenneth Jones
Lisa Hightow
John Peterson
Cornelius Baker
Erick Seelbach
Sheldon Fields
Black Gay Men's Research
Group
Julie Davids, CHAMP
Legacy
Black Caucus – HPTN 061

Information

- www.hptn.org