



HPTN

HIV Prevention
Trials Network

Orientation to the Community Engagement Program

Jontraye Davis, MHA
Community Programs Associate
FHI 360

Overview

- Defining Community and Community Engagement
- HPTN's Community Engagement Program
 - LOC Community Staff
 - Community Working Groups



HPTN

HIV Prevention
Trials Network

Defining Community and Community Engagement

What is Community

- The United States National Institutes of Health, Division of AIDS (NIH-DAIDS) defines community by the population in and for which the research is being conducted.

What is Community Engagement

- Community engagement focuses on the development and/or maintenance of partnerships with various stakeholders.
- Community engagement works to cultivate trust and engage stakeholders in a shared vision that is mutually beneficial to all parties.

Community Engagement in the HPTN

- HPTN supports partnerships between the community and researchers in research design, implementation, and dissemination of study information.
- Clinical Research Sites, Protocol Teams, Network Scientific Committees, Community Working Groups, Cross Network Relationships and Community Partners.

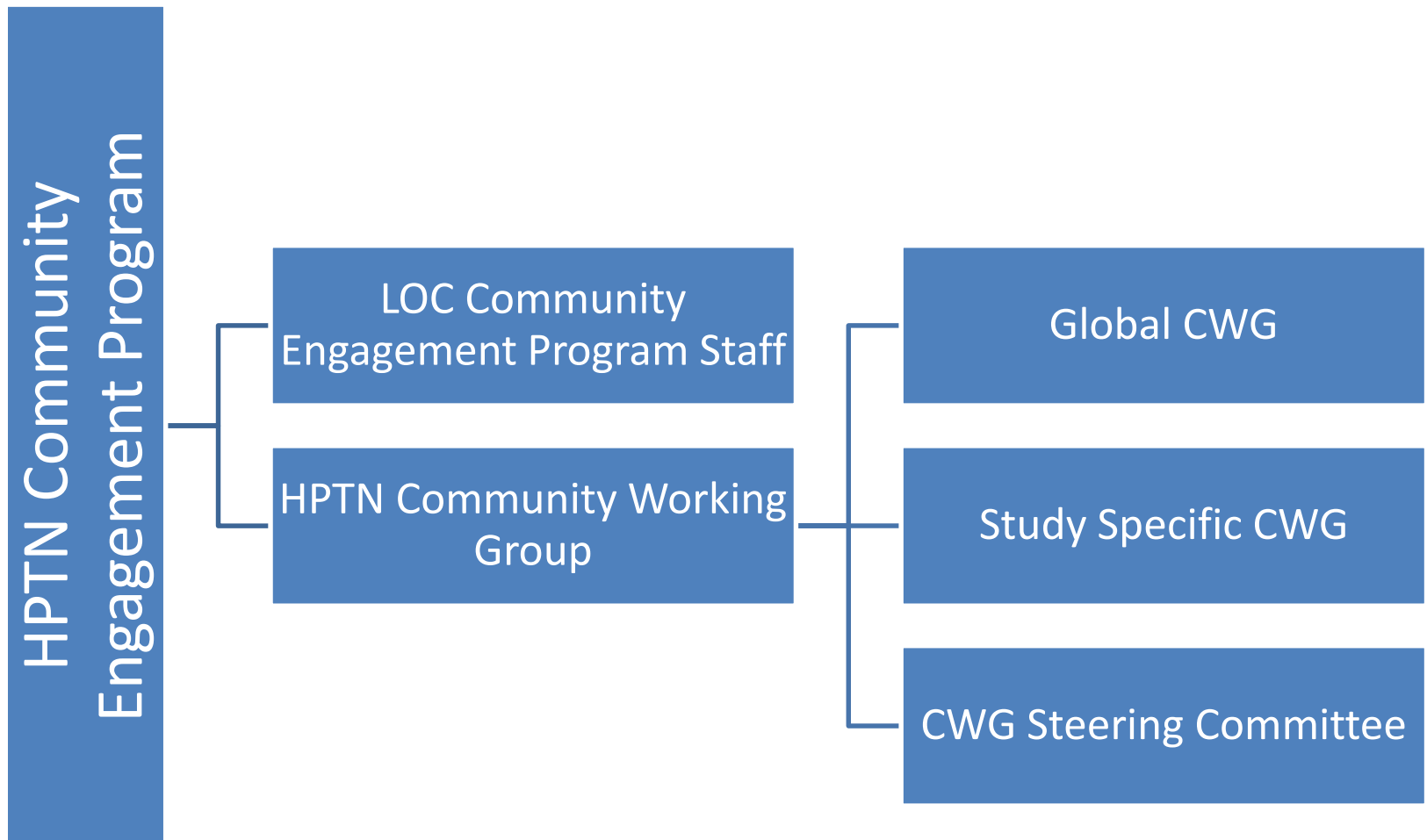


HPTN

HIV Prevention
Trials Network

The HPTN's Community Engagement Program

HPTN Community Program Structure



HPTN LOC Community Engagement Program Staff

- Provide support to the function and identified plans of the HPTN CWG.
- Facilitate community involvement in research
- Assess community education activities and advisory processes.
- Provide technical assistance to CRS





HPTN

HIV Prevention
Trials Network

Community Working Groups

HPTN Global CWG

- Conducts community preparedness and continuous involvement of activities to ensure successful implementation of studies through partnerships.
- Ensures community input into science generation and the research process
- Builds community capacity to provide input into research.

HPTN Global CWG

- Develops mechanisms for sharing experiences, lessons learned and best practices.
- Assesses the impact of community involvement and develop scholarship on community participation in research.

HPTN Global CWG

Membership includes:

Voting Members

- CWG Co-Chairs
- One site selected CE and CAB

Non-Voting Members

- HPTN LOC Community Program Staff
- HPTN Associate Directors
- HPTN PI's
- Division of AIDS Representative
- Ad-hoc External Scientific Advisor

Study-Specific CWGs

- Enhances study specific community strategies
- Identifies possible challenges/barriers to study implementation
- Generates solutions

Study-Specific CWGs

Membership Includes:

Voting Members

- CWG Co-Chairs
- One site selected CE and CAB

Non-Voting Members

- HPTN LOC Community Engagement Staff
- HPTN PI's
- Division of AIDS Representative
- Ad-hoc External Scientific Advisor

Study Specific CWG Objectives

- Phase II and Phase III Studies
- Open Label Extension Trials
- Feasibility Studies
- Community Engagement Work Plans

CWG Steering Committee

- Provides guidance and support to the HPTN CWG and advises HPTN Leadership on matters concerning community engagement in all aspects of the HPTN research agenda.
- Serves as a conduit of information between the HPTN CWG, HPTN leadership, and other HPTN working groups and committees.

CWG Steering Committee

- Membership includes:
 - CWG Co-Chairs (2)
 - Performance Evaluation Committee rep
 - Science Review Committee rep
 - Ethics Working Group rep
 - HPTN scientific committee reps (5)
 - HANC Community Partners reps (3)
 - HPTN LOC CEP staff (non-voting)

ACKNOWLEDGEMENTS

The HIV Prevention Trials Network is sponsored by the National Institute of Allergy and Infectious Diseases, the National Institute of Mental Health, and the National Institute on Drug Abuse, all components of the U.S. National Institutes of Health.

Questions?

