

Status Neutral Interventions in Substance Use

Jannie Hugo

University of Pretoria COPC Research Unit

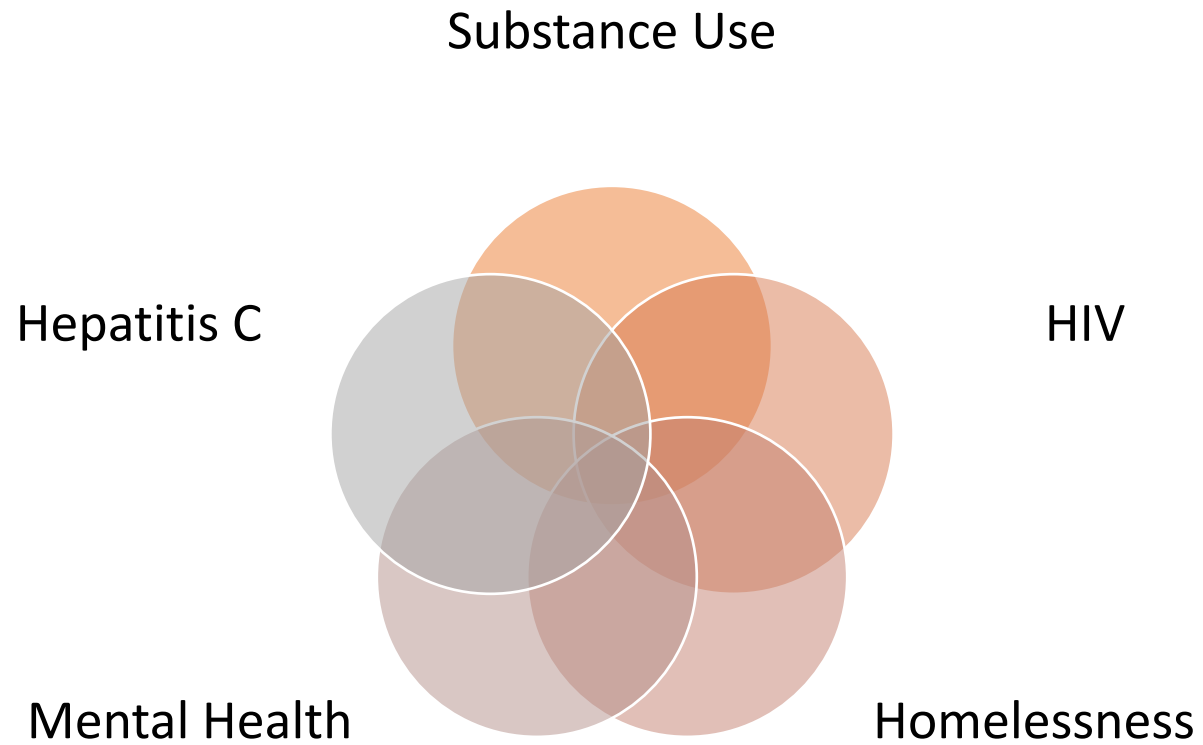
Madibeng Centre for Research



Faculty of Health Sciences
Department of Family Medicine



Substance Use is Complex, Complexifying



Complexity Theory

Everything is connected to everything else

- The Clock and the Cat. Mark Foden. <https://markfoden.com/clockcat>
- **Context** is Crucial
- The **Interaction** between agents more important than Nature of agent
- Rules: Collaboration vs Competition
- SOS: Situation, Other, Self
- **Collaboration** is the key
 - Need Companions and networks
- **Experimenting** is the process
- **Emergence** is what we are looking for
- Computer modelling, nature and human beings- **creativity**
- Silos is about power
- Stop organizational change and look at what we are doing



Injecting

HIV+

Injecting

HIV -

Smoking

Vulnerable Young People

Young people

Numbers South Africa: 60 Million People

Total Use (opioids): 400 000

Injecting Use: 82 500

Tshwane: 3,2 million people

Total use (opioids): 41 018

Injecting use: 17 566

- For 5% of total SA population
- About 10% of users
- 21% of injectors

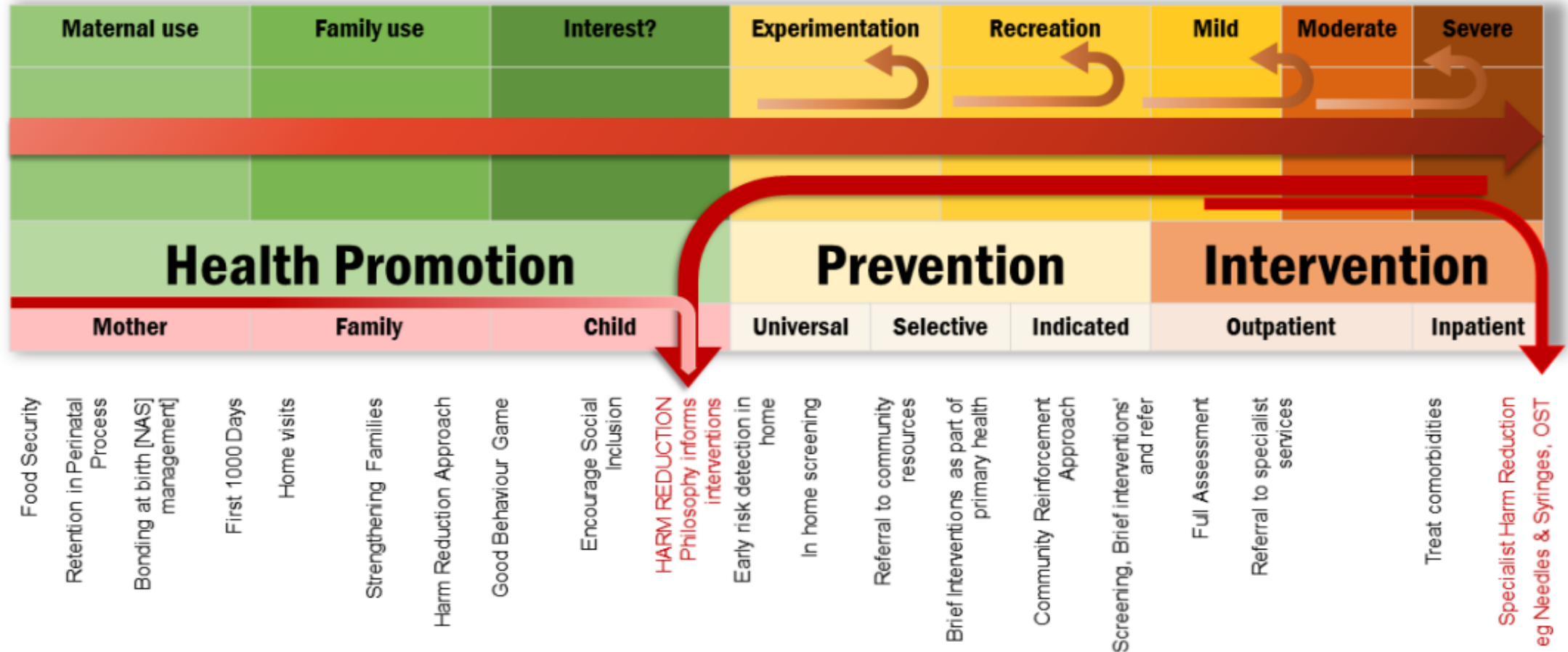
COSUP

- Community Oriented Substance Use Programme
- City of Tshwane funded
- University of Pretoria: COPC Research Unit
- Harm Reduction
- Since 2016
- 16 sites
- 5000 people
- 750 on OST: Methadone

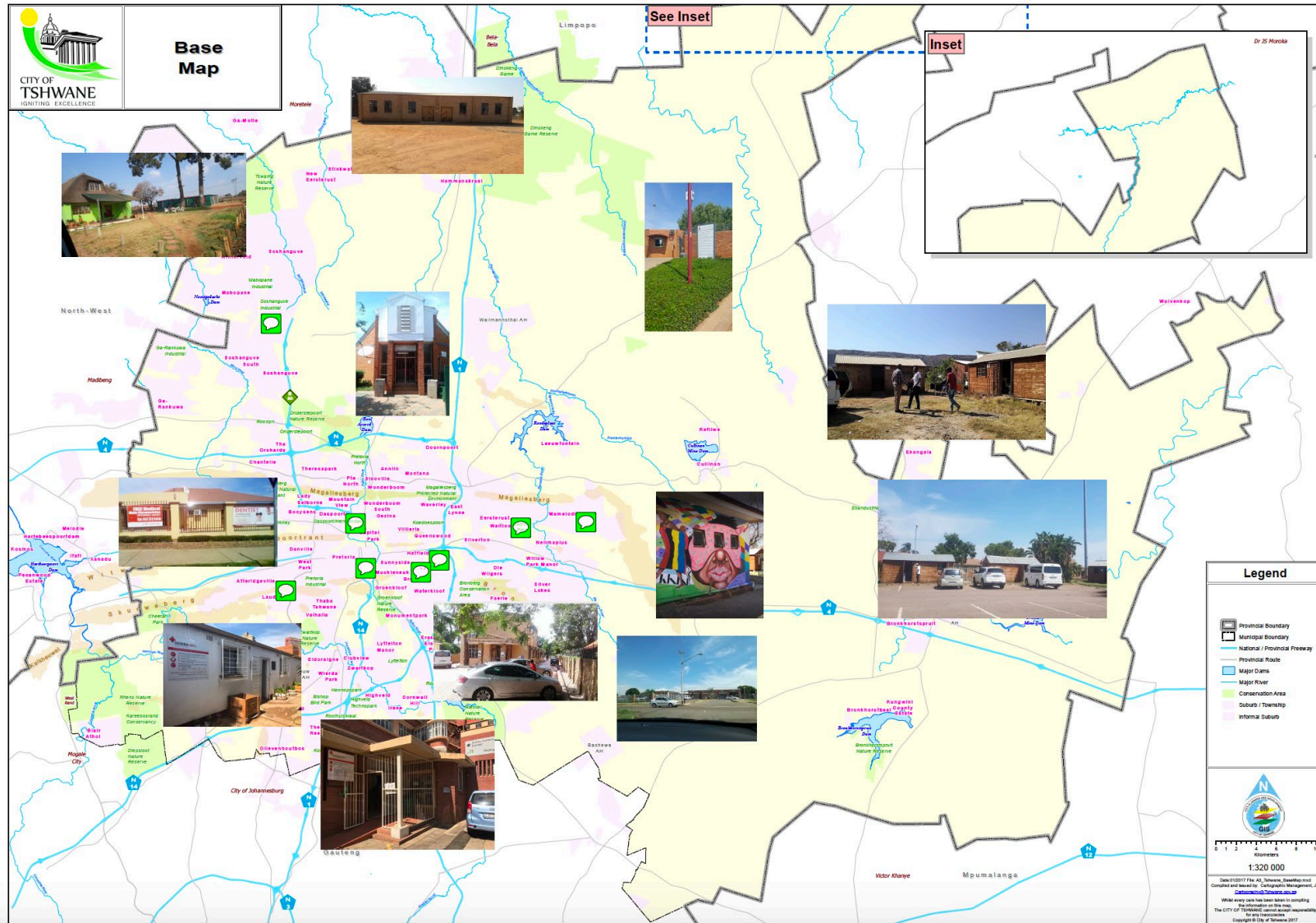


Principle 2: Comprehensive Care

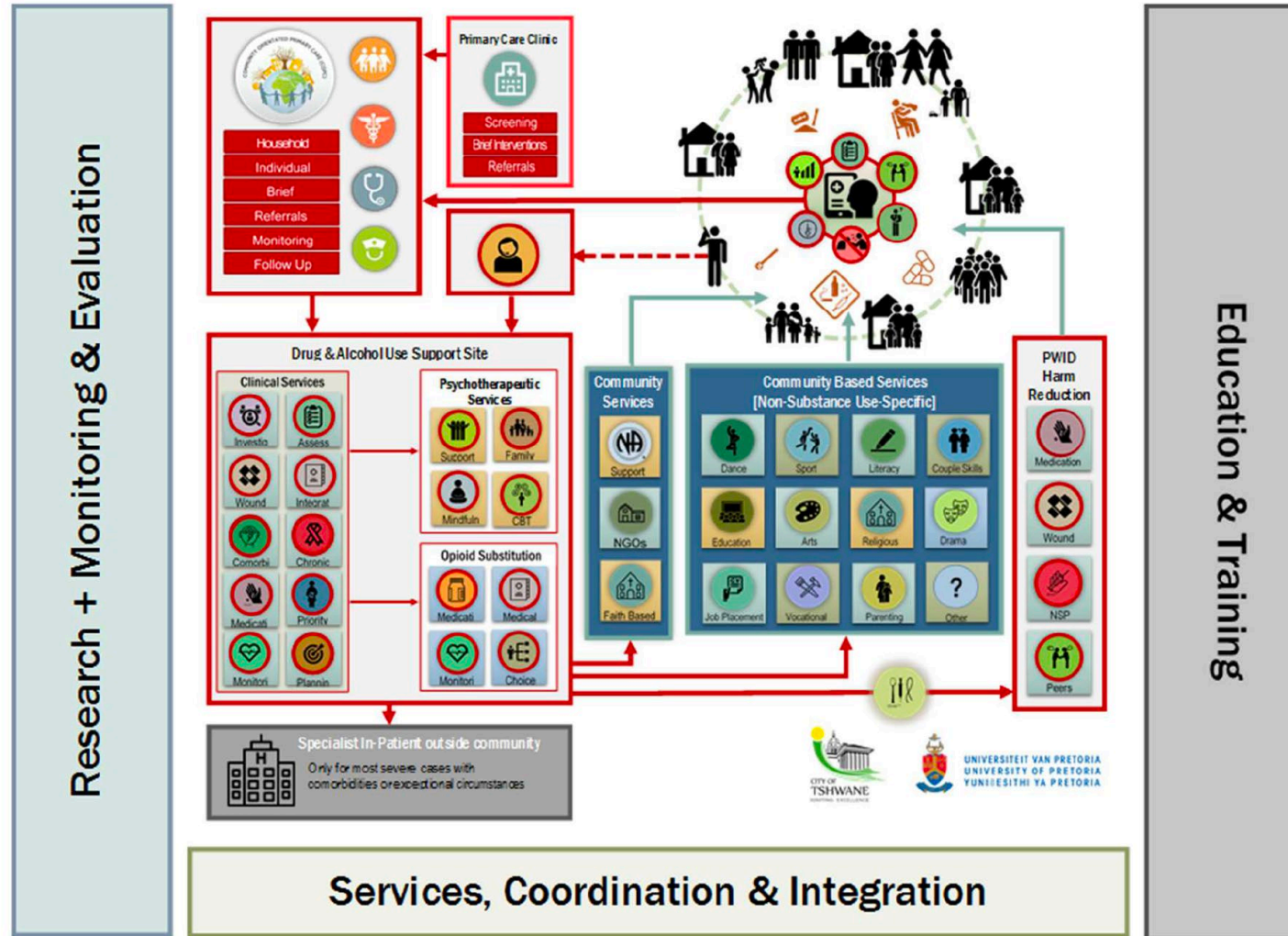
Continuum of drug & alcohol use



Tshwane COPUP Sites



COSUP Programme



References

Harm reduction in practice - The Community Oriented Substance Use Programme in Tshwane

- [Andrew Scheibe¹](#), [Shaun Shelly](#), [Johannes Hugo](#), [Matilda Mohale](#), [Sasha Lalla](#), [Wayne Renkin](#), [Natasha Gloeck](#), [Senzo Khambule](#), [Lorinda Kroukamp](#), [Urvisha Bhoora](#), [Tessa S Marcus](#)
- Afr J Prim Health Care Fam Med 2020 May 6;12(1):e1-e6. doi: 10.4102/phcfm.v12i1.2285.

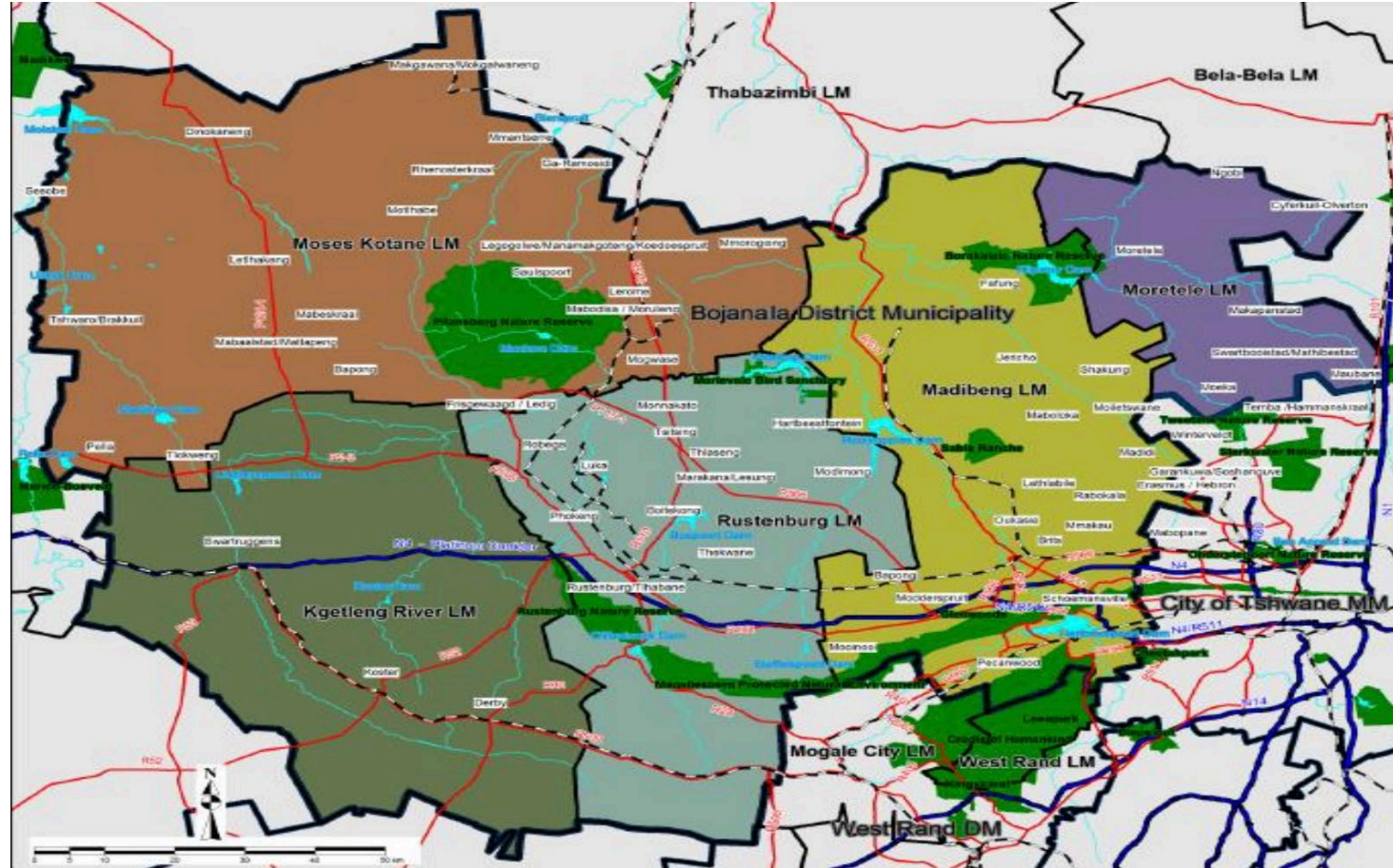
Community Oriented Substance Use Programme in the City of Tshwane: A Cross-sectional Survey of Stakeholder Perceptions.

- Southern African Journal of Social Work and Social Development <https://doi.org/10.25159/2708-9355/13358><https://unisapressjournals.co.za/index.php/SWPR/index> ISSN 2708-9355 (Online)#13358 | (16) (PDF Available from: <https://www.researchgate.net/publication/373884566> Community Oriented Substance Use Programme in the City of Tshwane A Cross-sectional Survey of Stakeholder Perceptions [accessed Sep 28 2023].

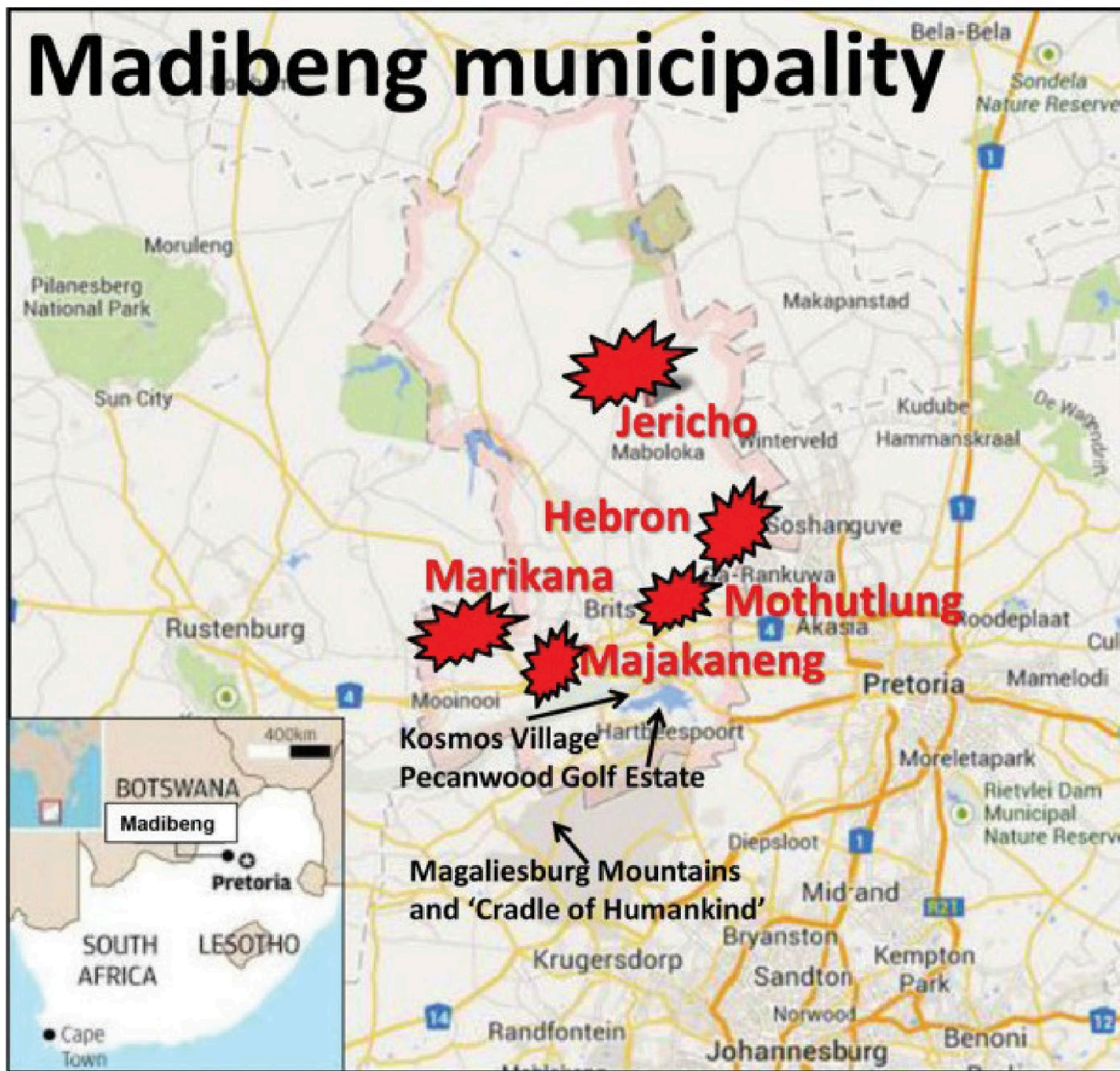
Madibeng Bojanala

- Mining
- Rural / Urban
- Madibeng Centre for Research

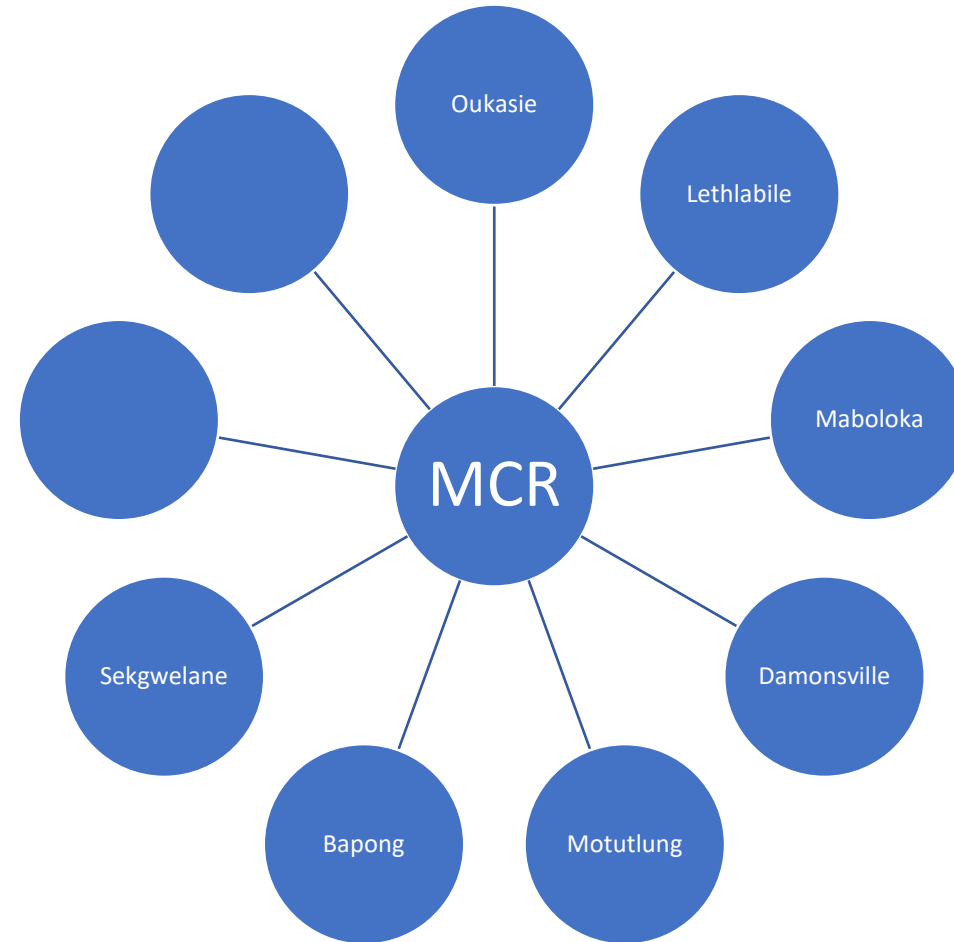
Bojanala



Madibeng municipality



MCR Model





Injecting

HIV+

Injecting

HIV -

Smoking

Vulnerable Young People

Young people

Thank You!

jannie.hugo@up.ac.za

+27 82 3722435